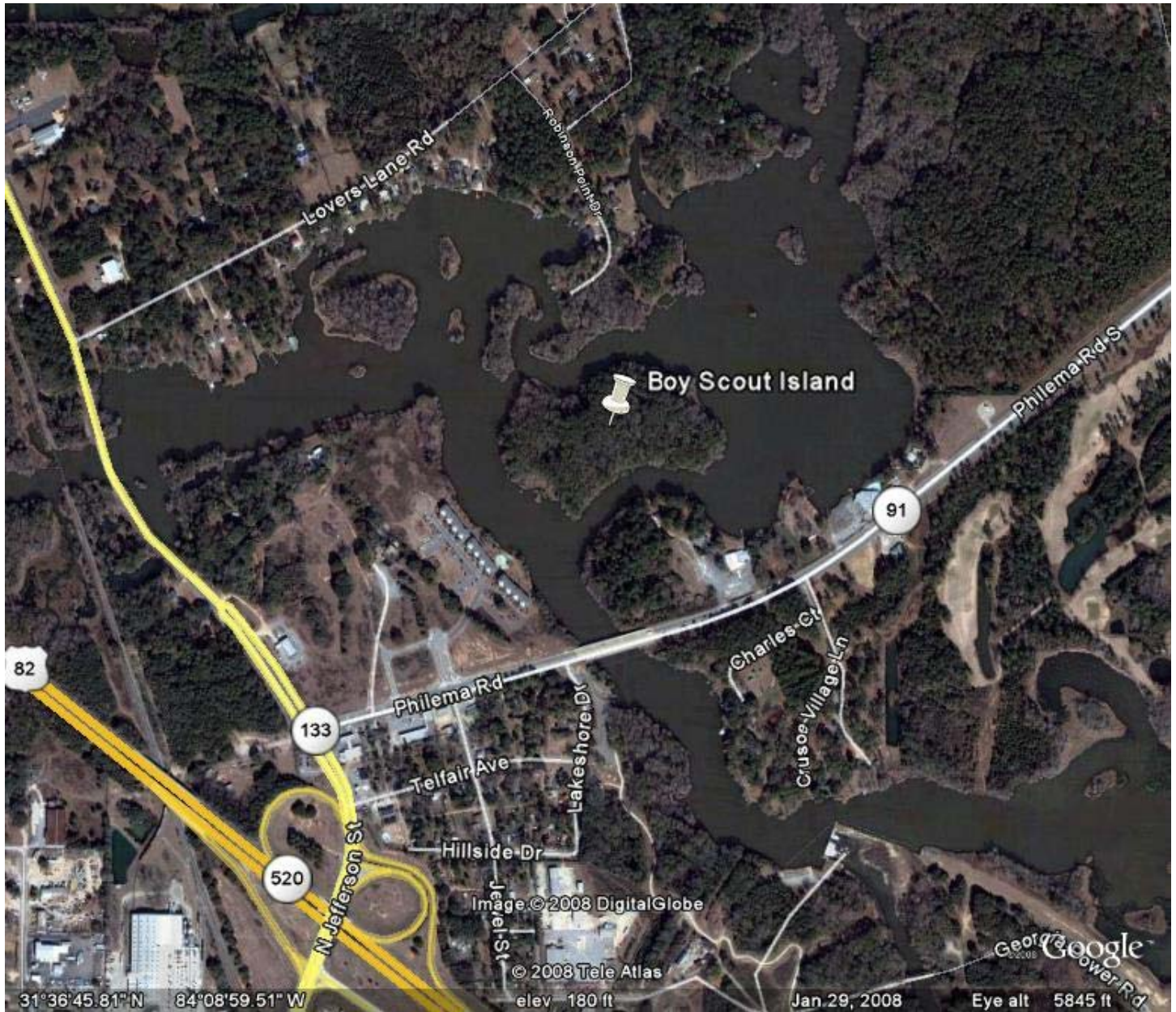


Appendix 85 to  
*THE HISTORY OF CHEHAW COUNCIL*  
*Scout Island in Lake Chehaw*



**Scout Island is located at 31 36 50.32 N 84 08 58.14 W**



**S. H. Holdon on the bridge to Scout Island  
Most likely taken in the 1940s**

*(Photo from Bill Huggins)*